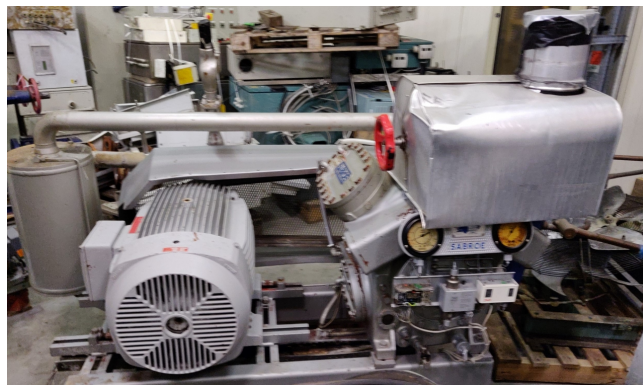


Sabroe SMC 104 L HP cool/freeze unit

Specifications

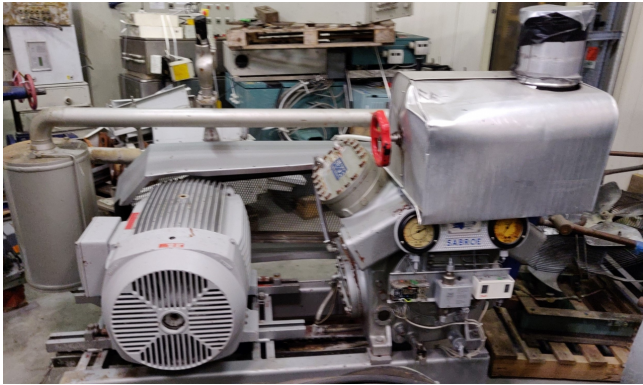
Marca	Sabroe
Tipo	SMC 104 L HP cool/freeze unit
Refrigerante	NH 3 (ammonia)
kW at +10°C/+40°C	69.1
kW at 0°C/+40°C	177.9
kW at -5°C/+40°C	141.6
Electromotor Specs	55 kW at 1480 RPM
m3 / h	275
Stock	1



Description

Used Sabroe SMC 104 L HP cool/freeze unit

Used, well maintained V belt driven JCI Sabroe SMC 104 L-HP Ammonia Nh3 compressor. Consisting of all necessary components (see all pictures attached). Our capacity table is based on ammonia NH3. For all the other specs, see the picture of the manufacturer model plate or the attached pdf file (if available). *Why choose for HOSBV? Were not only the largest used refrigeration specialist in Europe, but also, we deliver all equipment including an extensive test, warranty and industrial cleaning. *Optional we can also perform a new paint job and arrange the logistics



Model	Number of cylinders	Swept volume at 1500 rpm	Swept volume at 1800 rpm	Nominal capacities in kW at 1500 rpm			Nominal capacities in kW at 1800 rpm			Unit dimensions in mm			Weight excluding motor	Sound pressure level at 1500 rpm	Sound pressure level at 1800 rpm
				Single-stage	High-stage	Booster	Single-stage	High-stage	Booster	L	W	H			
SMC 104 S	4	226	271	127	135	35	153	235	42	2363-2865	1213	1219	1195	79	82
SMC 104 E	4	281	339	166	170	47	196	305	52	2363-2865	1213	1219	1215	86	89
SMC 106 S	4	339	407	181	201	53	229	352	64	2386-2890	1267	1247	1380	81	83
SMC 106 L	6	424	509	247	275	71	297	450	85	2386-2890	1267	1247	1400	82	84
SMC 108 S	6	509	604	304	339	87	364	540	104	2386-2890	1267	1247	1410	82	84
SMC 108 E	8	452	543	265	301	71	306	469	85	2313-2315	1363	1247	1595	82	84
SMC 108 L	8	566	679	330	360	94	396	600	113	2313-2315	1363	1247	1630	83	85
SMC 108 E	8	679	814	406	452	116	469	703	137	2313-2315	1363	1247	1630	83	85
SMC 112 S	12	679	814	382	424	104	459	703	127	3279-3687	1475	1448	2255	83	85
SMC 112 L	12	848	1018	495	543	141	593	900	169	3279-3687	1475	1448	2285	83	86
SMC 112 E	12	1018	1204	609	679	173	703	1060	206	3279-3687	1475	1448	2330	83	86
SMC 136 S	16	905	1086	580	641	161	611	938	170	3329-3737	1538	1445	2525	84	86
SMC 136 L	16	1131	1367	689	750	198	751	1200	226	3329-3737	1538	1445	2525	84	87
SMC 136 E	16	1357	1624	812	894	235	894	1360	284	3329-3737	1538	1445	2590	84	87

* Other refrigerants available on request

Nominal capacities are based on:
1500 rpm at 50 Hz.
1800 rpm at 60 Hz or VSD.

Design pressure, HP side: 28 bar
Design pressure, LP side: 18 bar
Differential pressure: 25 bar.
Sound pressure levels in free field, over reflection.

Min./max. speed	R717
SMC S-series	900-1800 rpm
SMC L-series	900-1800 rpm
SMC E-series	900-1800 rpm